



Volume 2, Issue 7, October 2013

AMPPE's Monthly Membership Newsletter

[Your source for up-to-date information in the Mountain Parks](#)

We are less than two weeks away from our prestigious annual gala and are excited to announce the Honourable Doctor Richard Starke Minister of Tourism, Parks & Recreation as our Keynote speaker for this wonderful evening. To purchase your tickets please call our office at 403-762-3800 or visit <http://amppe.org/fundraising-dinner/>. We look forward to seeing you all for another year!

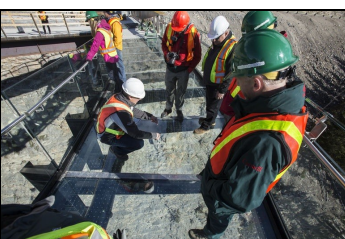
*Sincerely Our AMPPE Fundraising Team,
Marilyn Bell, Carrie Hunter, & Carly O'Neill*



Glacier Skywalk nears completion

As construction nears completion on Brewster Travel Canada's Glacier Skywalk, the tourism company took the opportunity to show off its latest project to a handful of industry insiders. Upon opening May 1, 2014, the site will see tourists delivered by motor coach from the Icefields Centre. Guests will walk along the walkway situated alongside the Icefields Parkway, visiting six interpretive stations. A self-directed audio tour recorded in six languages will guide visitors between stations.

[More Details](#)



ADB gives thumbs up to Sunshine lodge

Parks Canada's Advisory Development Board (ADB) unanimously recommended the federal agency approve a proposed brand new Goat's Eye Day Lodge at Sunshine Village. The proposed three-storey, 3,300-cubic-metre lodge will replace several ATCO trailers and a spring tent that have been on site since 2007. Tourism officials and sports user groups were extremely supportive of the proposed facility, calling what is there now an embarrassment for the region.

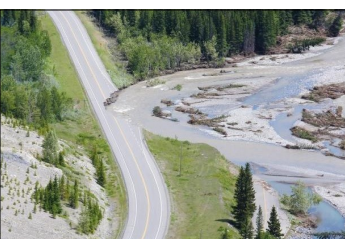
[More Details](#)



\$60 million for K-Country flood repairs

The Alberta government will invest \$60 million in Kananaskis Country over the next four years to repair flood-damaged trails, campgrounds and day use areas. Minister of Tourism, Parks and Recreation Richard Starke made the announcement Wednesday (Oct. 23), noting work will help restore the battered parkland. The flood destroyed about 50 campgrounds, 60 day use areas and 160 kilometres of trail in Kananaskis Country, and these funds will support the restoration effort.

[More Details](#)



Bear 64's cubs may be on their own

Grizzly bear 64's three cubs have been seen hanging around the outskirts of the Banff townsite – without their famous mom. The three two-and-a-half-year-old bruins were spotted eating grass near the Cave and Basin, along Mountain Avenue towards the Rimrock Resort and in a residential yard off Springs Crescent throughout Saturday (Oct. 5). There was no sign of their celebrity mom, a 24-year-old female grizzly that has been dubbed the matriarch of the Bow Valley.

[More Details](#)



Construction of the Bow Valley Parkway Sense of Arrival Structures

It seems that even the Wildlife are interested in the Parks Canada construction of the Bow Valley Parkway's "Welcome Sense of Arrival" structures. Work has begun at both the east and west ends of the parkway. This photo is taken from the structure at the east end and construction of the Castle structure is due to begin shortly. Parks Canada will gate 17 kilometers of the eastern Bow Valley Parkway from April 1- June 17 annually. The temporary restriction will be from 8 p.m. to 8 a.m. (dusk to dawn) and will provide access for the wildlife that habituates this area.

