



Volume 1, Issue 1, Jan. 2012



## AMPPE Launches New On-Line Newsletter!

### *Your source for up-to-date information in the Mountain Parks*

Welcome to the first edition of our new on-line AMPPE Newsletter. Our goal is to send out one newsletter each month to keep our membership up-to-date on the issues that AMPPE is involved with and provide links to more detailed information on our website. Please let me know what you think about these issues, the newsletter, or anything else that's happening in your world. Sincerely, Monica Andreeff, Executive Director.

**QR77 Radio - AMPPE's position on the Brewster Glacier Discovery Walk:** [Click here](#)



## Bow Valley Parkway Decision

March 1, 2013 will mark the first day of a gated mandatory travel restriction on the Bow Valley Parkway for a 14 km stretch of road from 8 pm to 8 am, until June 27th every year. AMPPE plans to work closely with Parks Canada to ensure that visitor education signage, a sense of arrival and communication plans will be put in place in 2012, as promised. The travel restriction has been voluntary since the late 1990s and biologists hope to improve wildlife habitat security.

[More Details](#)



## Jasper Recreational Guidelines: Deadline for Feedback

Out of a possible eight new nationally-approved recreational activities from Parks Canada, Jasper National Park has approved four: mountain biking, aerial adventure parks, hang-gliding and paragliding, and traction-kiting. Download the provisional guidelines and send in your comments to Jasper Superintendent Greg Fenton before **Jan. 31**.

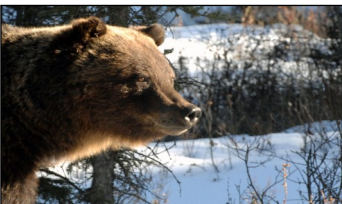
[More Details](#)



## Woodland Caribou Captive Breeding Partnership

Calgary Zoo-bred Woodland Caribou will be used to re-stock herds in Jasper and Banff national parks which have declined over the last 25 years, from 800 to fewer than 250. Parks Canada, the Governments of British Columbia and Alberta, and the Calgary Zoo will implement a woodland caribou captive breeding program supporting protection of this "species at risk" in the mountain national parks. Public feedback on this initiative closes **Jan. 31, 2012**.

[More Details](#)



## 2012 Membership Renewal

January marks the beginning of our annual membership renewal and we will be checking in with all of our members in the next few weeks. Your valued membership helps to promote a balance between sustainable tourism, ecological integrity, and visitor experience and education in our treasured mountain parks. We greatly appreciate your continued support!



## 11th Annual AMPPE Dinner

Close to 250 guests dined, danced and donated at the annual AMPPE event, which was headlined by Michelle Rempel, Parliamentary Secretary to the Minister of the Environment. Thank you to all of our members that purchased tables, tickets, and brought guests to our event!

To remove your name from our mailing list, please [Click here](#).

Questions or comments? Email Linda Chisholm at [admin@amppe.org](mailto:admin@amppe.org) or call 403-762-3800.